

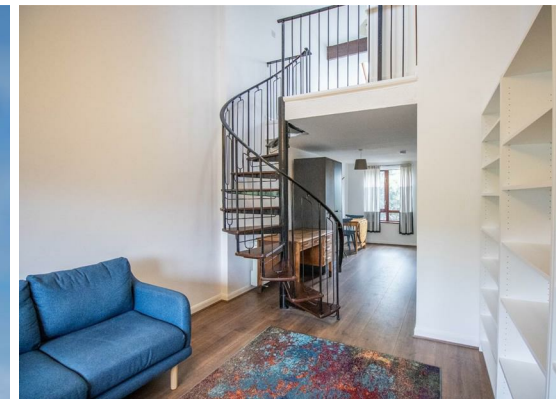


Redmayne Arnold & Harris  
estate agents, letting agents & surveyors

rah.co.uk



TO LET



3 Glenoven Court Searle Street, Cambridge, CB4 3DW

£1,400



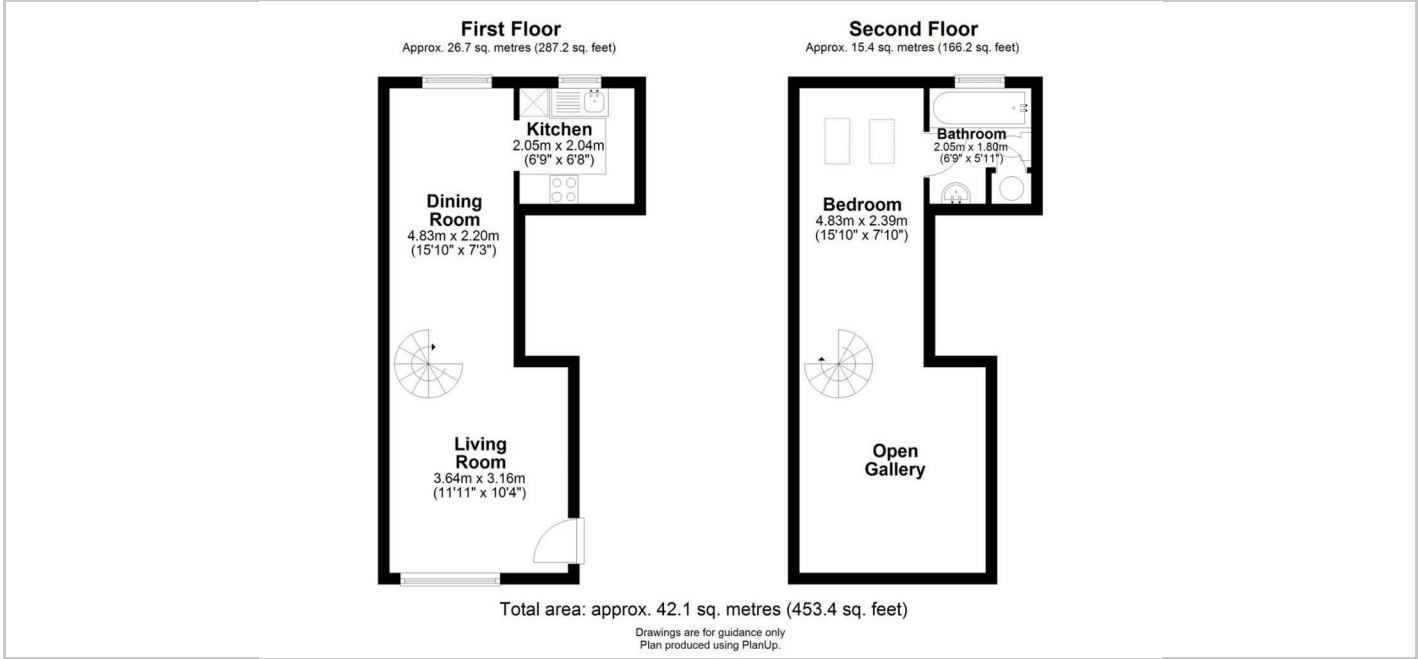
**THE PROPERTY**

This beautifully presented one-bedroom first floor apartment is situated in the heart of Cambridge, it is ideally located close to local shops, with bike and bus routes into Cambridge city center and easy access to the M11 and A14.

The living and dining space is open-plan and features a fully-fitted kitchen with washing machine, integrated fridge/freezer, cooker, oven and microwave. The space includes a dining table with two chairs, desk, cupboard and fully-furnished living area. There are spiral stairs leading into the spacious bedroom, and a good sized bathroom. There is a communal car park with one allocated space.

The property will be managed by RAH.

EPC Rating: C  
 Council Tax Band: C  
 Deposit: £1610  
 Holding Deposit: £330



**SITUATION**

**Directions**

